

Anti-H_MUC1(CD227)hIgG1Antibody(clivatuzumab)

Product information

GM-28930AB-10	10 µg
GM-28930AB-100	100 µg
GM-28930AB-1000	1 mg

Antibody Information

Species Reactivity	Human
Clone	clivatuzumab
Source/Isotype	Monoclonal human IgG1/k
Application	Flow cytometry
Specificity	Detects MUC1
Gene	MUC1
Other Names	EMA; MCD; PEM; PUM; KL-6; MAM6; MCKD; PEMT; CD227; H23AG; MCKD1; MUC-1; ADMCKD; ADTKD2; Ca15-3; ADMCKD1; CA 15-3; MUC-1/X; MUC1/ZD; MUC-1/SEC
Gene ID	4582
Background	Mucin short variant S1, also called polymorphic epithelial mucin (PEM) or epithelial membrane antigen (EMA), is a mucin encoded by the MUC1 gene in humans. MUC1 is a member of the mucin family and encodes a membrane bound, glycosylated phosphoprotein. MUC1 is a glycoprotein with extensive O-linked glycosylation of its extracellular domain. Mucins line the apical surface of epithelial cells in the lungs, stomach, intestines, eyes and several other organs. Mucins protect the body from infection by pathogen binding to oligosaccharides in the extracellular domain, preventing the pathogen from reaching the cell surface. Overexpression of MUC1 is often associated with colon, breast, ovarian, lung and pancreatic cancers.
Storage	Store at 2-8°C short term (1-2 weeks).Store at ≤ -20°C long term. Avoid repeated freeze-thaw.
Formulation	Phosphate-buffered solution, pH 7.2.
Endotoxin	< 1 EU/mg, determined by LAL gel clotting assay

Data Examples

Flow cytometry

The recommended usage range is 0.5-4 µg per test. H_MUC1(CD227) CHO-K1 Cell Line (Catalog # GM-C19062) was stained with Anti-H_MUC1(CD227)hIgG1 Antibody(clivatuzumab) (Catalog # GM-28930AB) or isotype control antibody, followed by anti-Human IgG APC-conjugated Secondary Antibody.

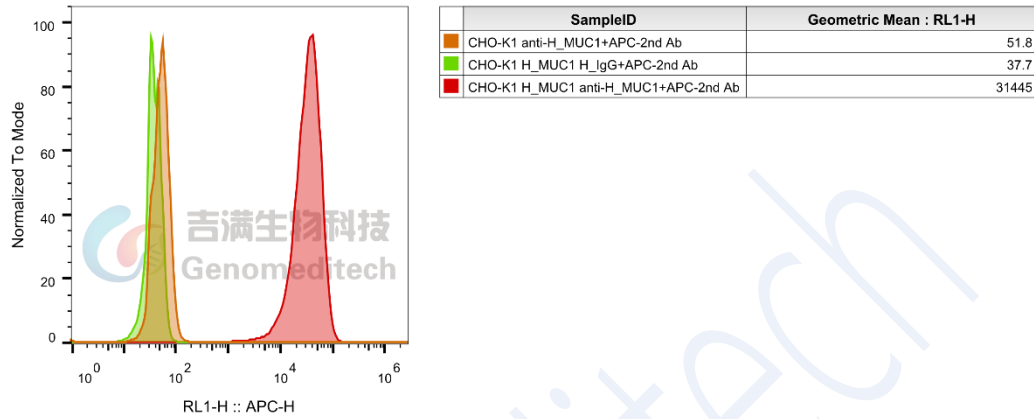


Fig. FACS